

Hilfskontaktblöcke HN.. / Auxiliary contact blocks HN..

für/for K(G)3-07 - K3-74, K(G)2-07 - K2-60

Approbationen / Approvals

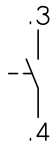
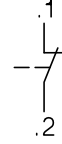
 Nordamerika
 North America

 Europa
 Europe

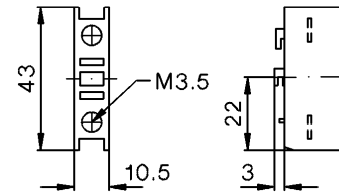
 Rußland
 Russia

 China
 China


Schaltbilder / Wiring diagrams

HN10

HN01


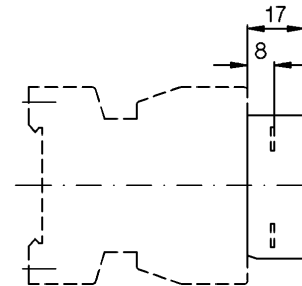
Maße / Dimensions



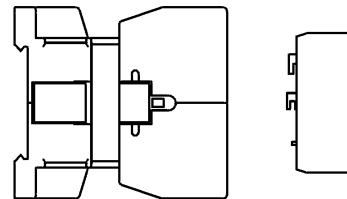
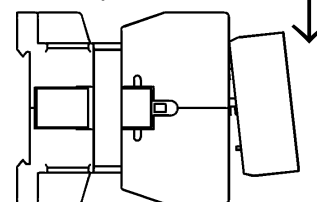
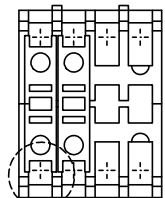
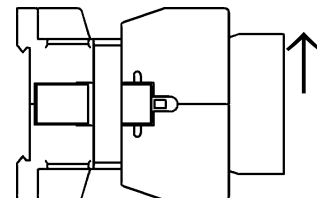
Technische Daten nach IEC 60947 Technical Data acc. to IEC 60947

Typ	HN..		
AC1 = I_{th} bei/at 690V	max. 40°C	A	10
	max. 60°C	A	6
AC15	220-240V	A	3
	380-400V	A	2
	500V	A	1,2
	660-690V	A	0,6
DC13	60V	A	2
	110V	A	0,4
	220V	A	0,1

 max. gL (gG) A 20

 Pz2  0,8 - 1,4Nm


Montage / Mounting

 1. andrücken
 attach

 2. aufsnappen
 snap-on

 3. abnehmen
 detach


Die vollständige Klemmenbezeichnung nach EN50011 ergibt sich aus den am Schütz angebrachten Platzziffern (2., 3.) und den am Hilfskontakt angebrachten Funktionsziffern (z. B. .1, .2 oder .3, .4)

The complete terminal marking according to EN50011 results from the sequence number on the contactor (2., 3.) and the function number on the auxiliary contact block (e. g. .1, .2 or .3, .4)

