

Hilfskontaktblöcke HA.. / Auxiliary contact blocks HA.. für/for K(G)3-07 - K3-74, K(G)2-07 - K2-60

Approbationen / Approvals

Nordamerika
North America



Europa
Europe

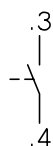


Rußland
Russia

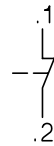


Schaltbilder / Wiring diagrams

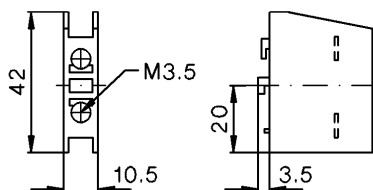
HA10



HA01



Maße / Dimensions

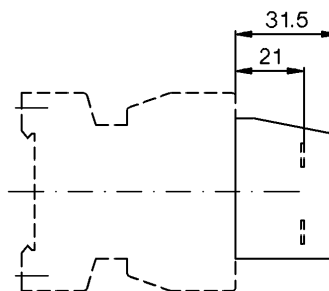


Technische Daten nach IEC 60947 Technical Data acc. to IEC 60947

Typ	HA..		
AC1 = I _{th} bei/at 690V	max. 40°C	A	25
	max. 60°C	A	20
AC15	220-240V	A	6
	380-400V	A	3
	500V	A	2
	660-690V	A	1
DC13	60V	A	8
	110V	A	1
	220V	A	0,1

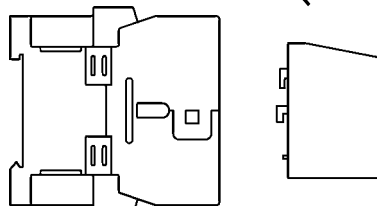
max. gL (gG) A 25

Pz2 0,8 - 1,4Nm

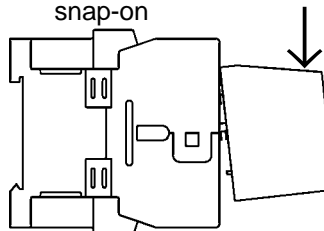


Montage / Mounting

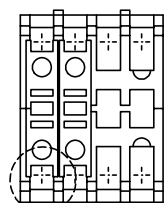
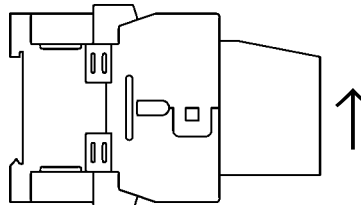
1. andrücken
attach



2. aufsnappen
snap-on



3. abnehmen
detach



Die vollständige Klemmenbezeichnung nach EN50011 ergibt sich aus den am Schütz angebrachten Platzziffern (2., 3.) und den am Hilfskontakt angebrachten Funktionsziffern (z. B. .1, .2 oder .3, .4)

The complete terminal marking according to EN50011 results from the sequence number on the contactor (2., 3.) and the function number on the auxiliary contact block (e. g. .1, .2 or .3, .4)